

6514 CLONE MODULE

The Cloner can be used with the 650/650V range of drives.

You can store up to 10 drive set-ups in each module. These can be transferred between any of the drives. Thus, a 650 Frame 1 set-up can be cloned to a 650 Frame F.



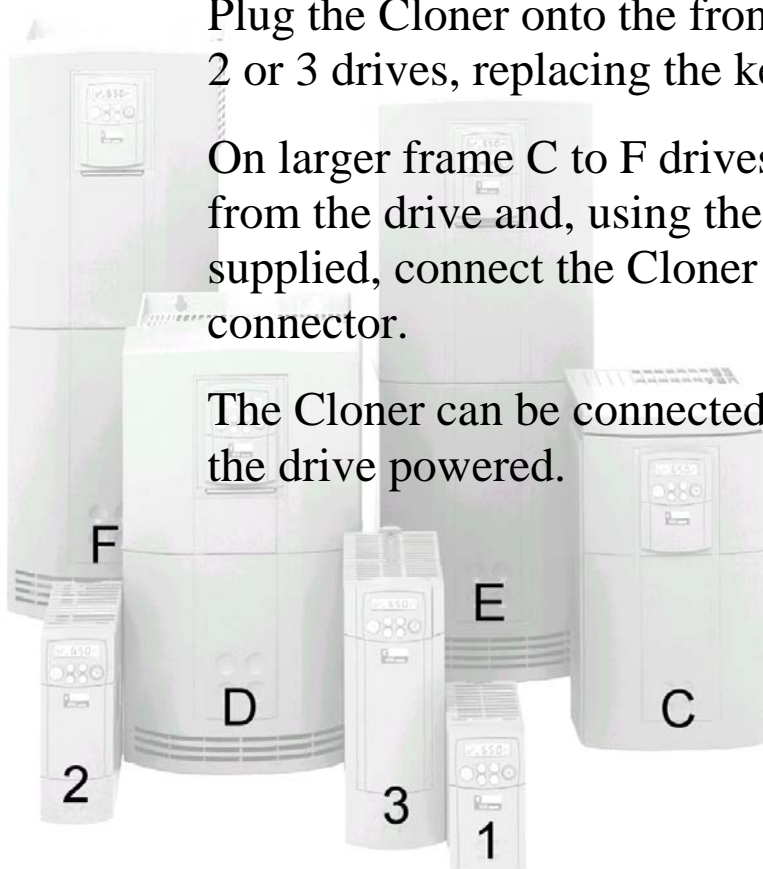
Product Code : 6514/00

Connections

Plug the Cloner onto the front of 650/650V Frame 1, 2 or 3 drives, replacing the keypad.

On larger frame C to F drives, remove the keypad from the drive and, using the standard P3 lead supplied, connect the Cloner to the exposed keypad connector.

The Cloner can be connected and disconnected with the drive powered.

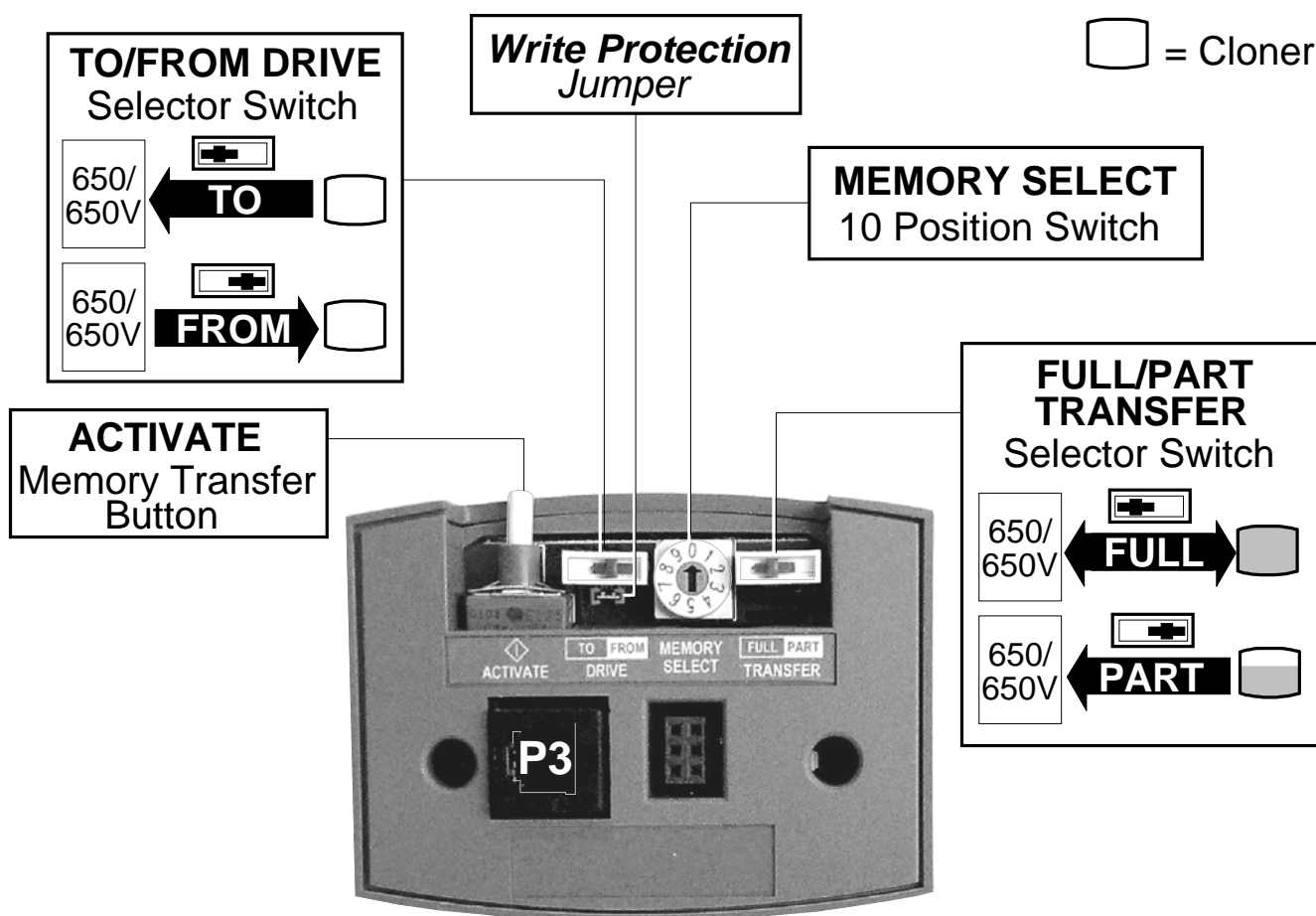



650/650V Frame Sizes



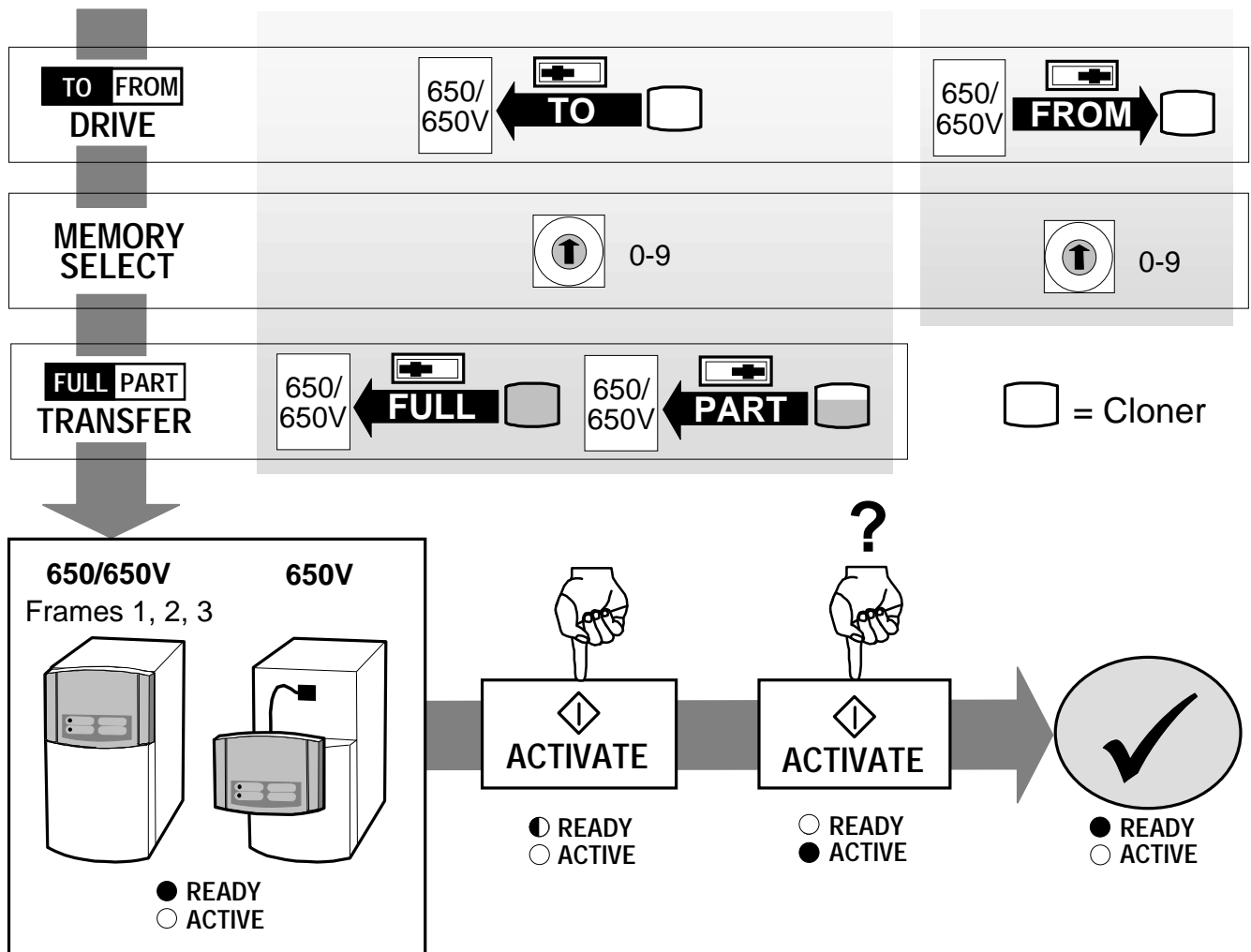
**EUROTHERM
DRIVES**

Controls



 ACTIVATE	Double click to upload/download data, or click to clear an Error state
TO FROM DRIVE	Select TO for downloading data to a drive Select FROM for uploading data from a drive
MEMORY SELECT	10 memory locations for upload or download
FULL PART TRANSFER	<p>When downloading data to a drive: FULL selected - transfers all data PART selected - transfers data that is not motor/power specific (useful for transfer between different power ratings). Refer to the drive's Product Manual for Motor Specific Parameters.</p> <p>When uploading data from a drive: This switch is ignored and full data is always transferred</p>
WRITE PROTECTION	Removing the jumper prevents writing to the Cloner. Data can still be downloaded, i.e. Cloner → drive

Transferring Data



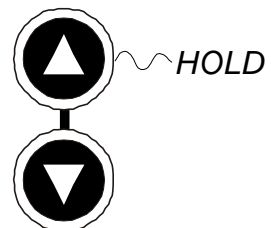
Unplug the module from the drive when finished. It is not intended for permanent connection.

Refer to the drive's Product Manual for drive EMC information.

When performing a full application download from the Cloner, it is advisable to reset the drive to factory defaults (2-button reset). To reset the drive:

Hold down the keys opposite:

Power-up the drive, continue to hold for at least 1 second



DIAGNOSTIC INFORMATION

LED	LED State	Drive State
READY	ON	Ready for upload/download request.
	FLASHING	Asking if you are sure you want to transfer data. Times-out after 10 seconds.
ACTIVE	ON	Data transfer in progress.

ERROR INDICATION

LED	LED State	Cause
READY & ACTIVE	both OFF	Drive not powered-up or drive software version too early (V4.4 onwards supports cloning). or Drive's comms port set to FIXED, refer to Product Manual.
ACTIVE	FLASHING	After ACTIVATE button 1st click : Download requested from empty or corrupted memory location - no data will be transferred. Click ACTIVATE to clear the error indication. or An upload has been requested but the Write Protection jumper is removed. Click ACTIVATE to clear the error indication. After data transfer: Indicates a comms error resulting in Cloner or drive memory corruption: click ACTIVATE to clear the error indication and retry the transfer.

Memory Notes

ATTACH SERIAL NUMBER LABEL

0		5	
1		6	
2		7	
3		8	
4		9	