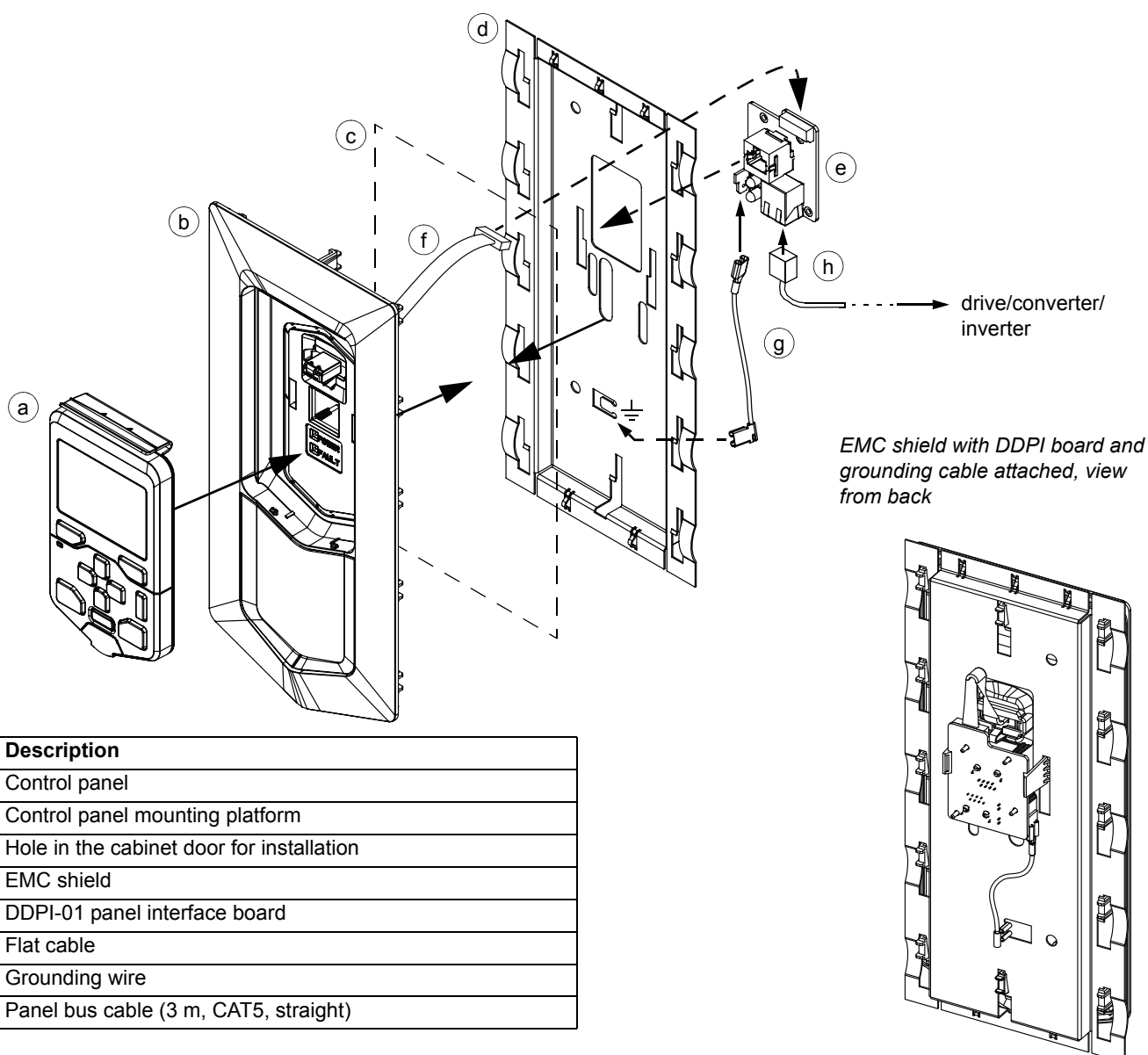


Installation guide

DPMP-01 mounting platform for ACS-AP control panel

Installation instructions

1. Cut a hole in the cabinet door (c). See the [Dimension drawing](#) on next page.
2. Insert the mounting platform (b) into the hole (c). Hold the platform on place.
3. On the other side of the door, lead the flat cable (f) through the EMC shield (d). Attach the shield: fit the holes of the shield to the guides of the platform and slide the shield downwards.
4. Connect the flat cable (f) to the DDPI board (e), and snap the board under the plastic clips.
5. Bend the grounding tab and connect the grounding wire (g).
6. Connect the panel bus cable (h) to the DDPI board (e), and to the drive/converter/inverter.
7. Attach the control panel (a).



Dimension drawing

Cutting in the cabinet door:
109 mm × 223 mm (4.29 in. × 8.78 in.)

Cabinet door thickness:
1.5...2.5 mm (0.059...0.098 in.)

