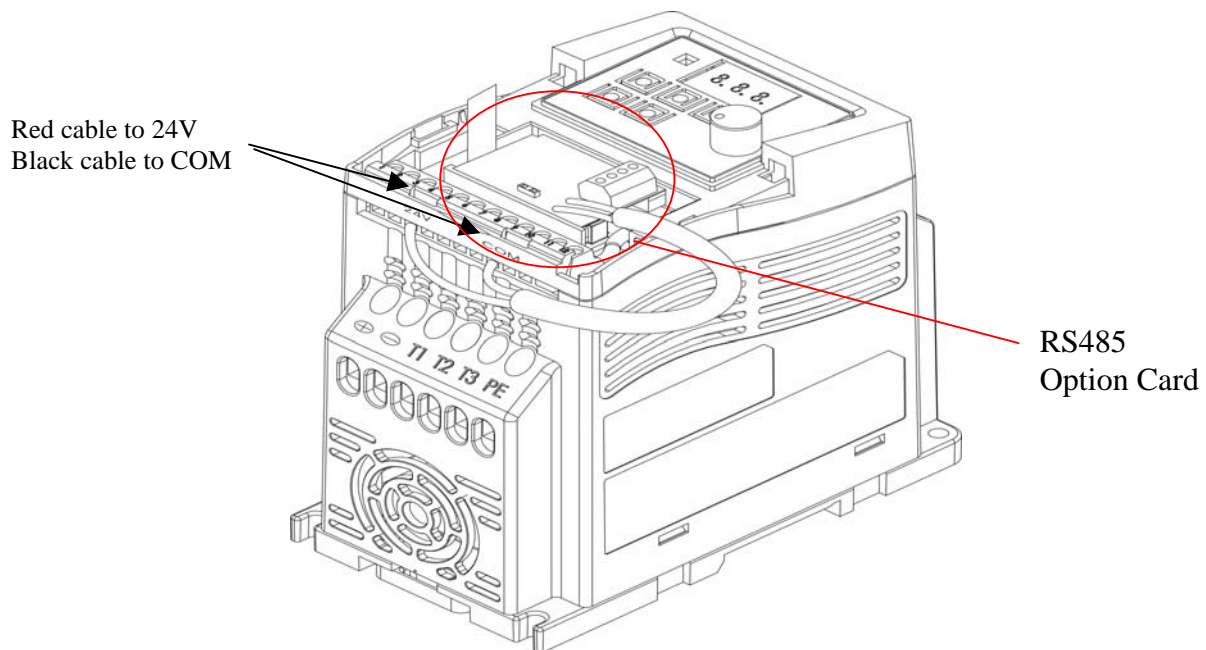


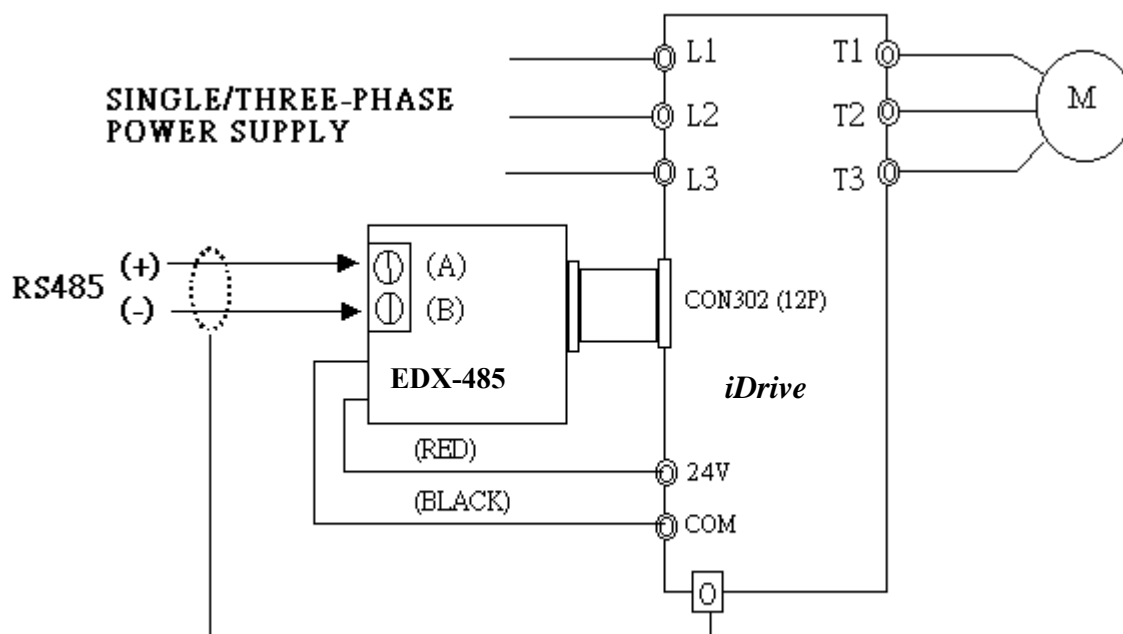
Chapter 6 Options

6.1 Option cards

6.1.1 RS-485 option card (EDX-485)



EDX-485 connection diagram:

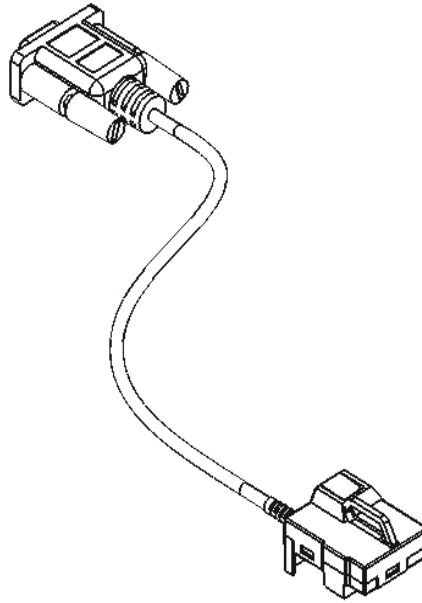


Note :

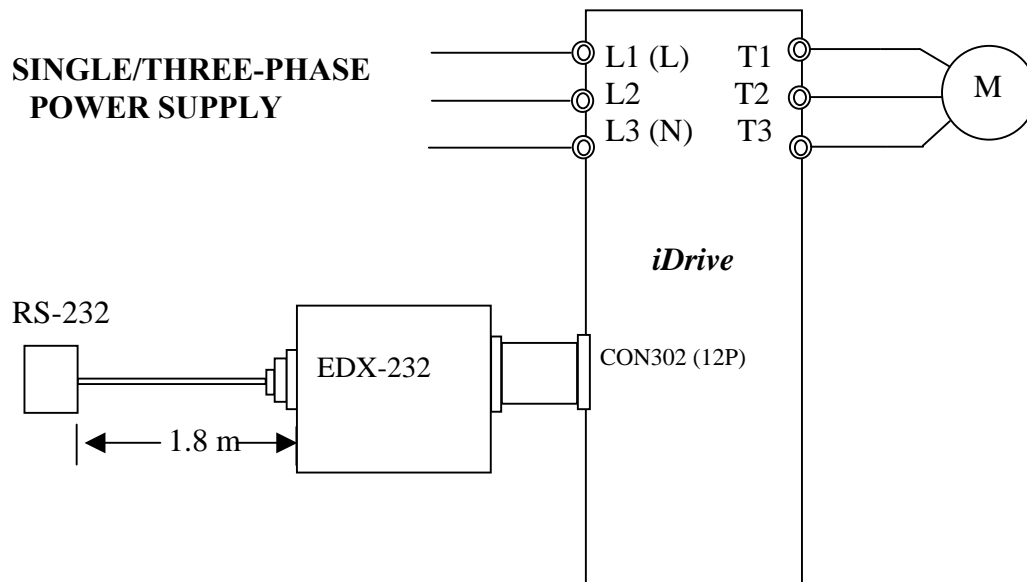
In order to avoid external interfere with option card, fit top cover to the main unit.

Use isolated RS232 / RS485 converter connecting with PC and option card to avoid damaging configuration.

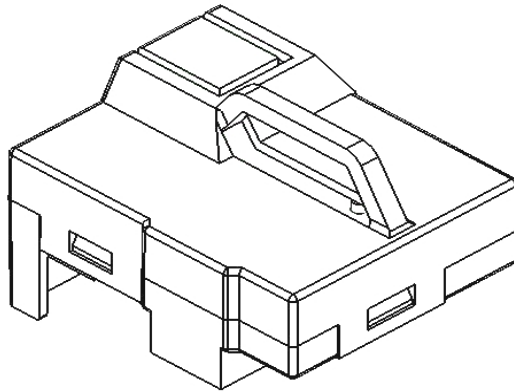
6.1.2 RS-232 option card and cable (EDX-232)



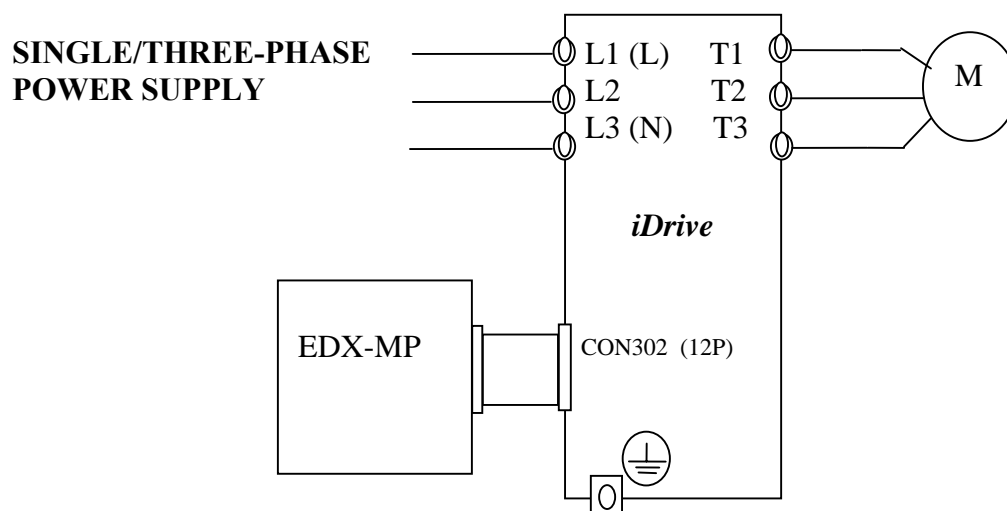
EDX-232 connection diagram



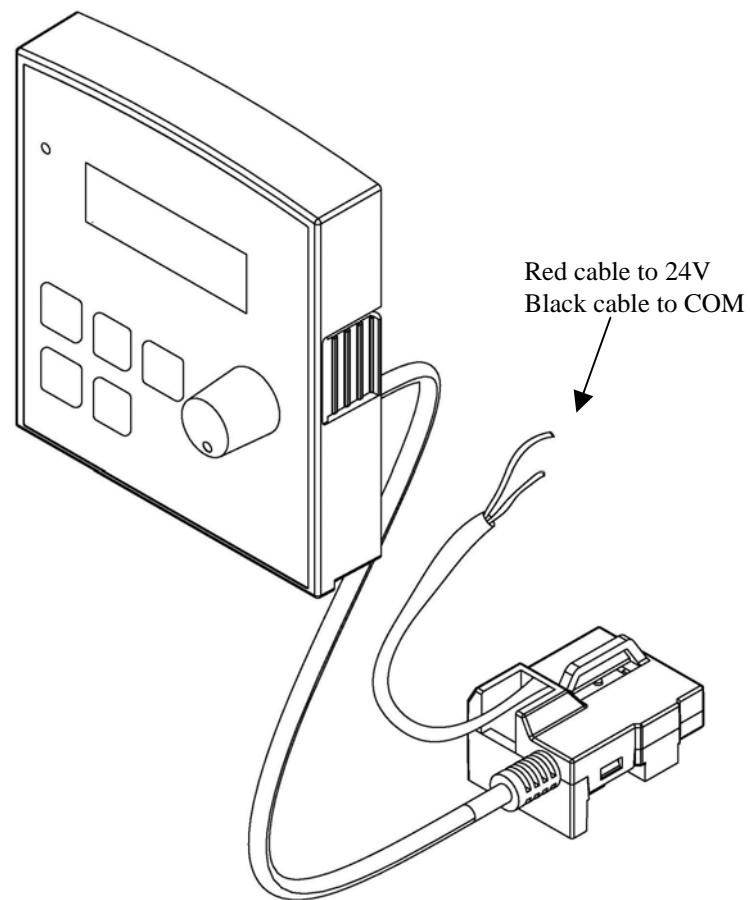
6.1.3 Program Copy option card (EDX-MP)



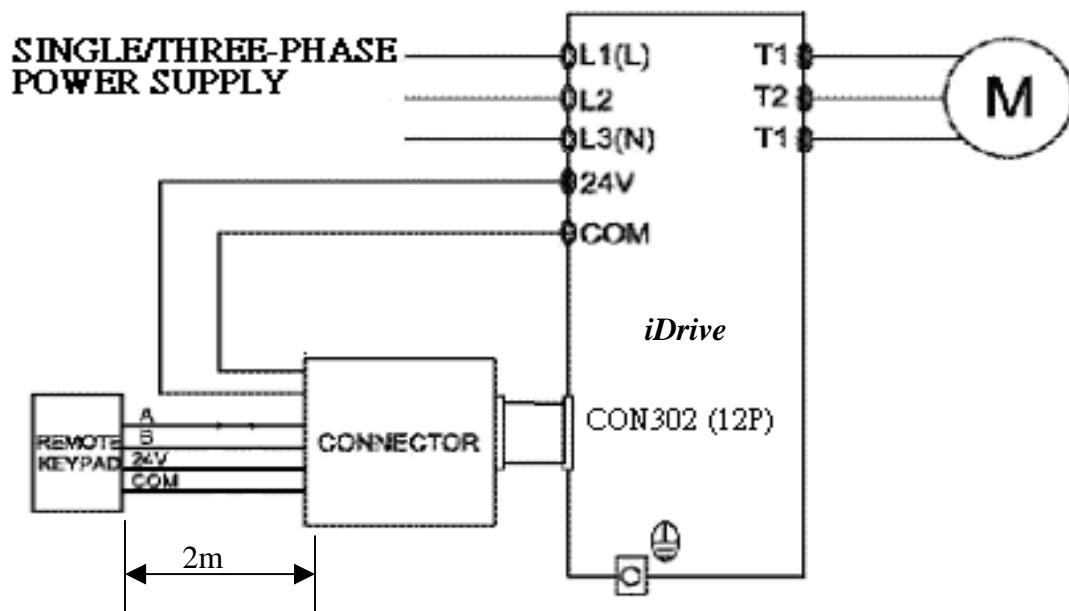
EDX-MP connection diagram



6.1.4 Remote keypad (EDX-LED)

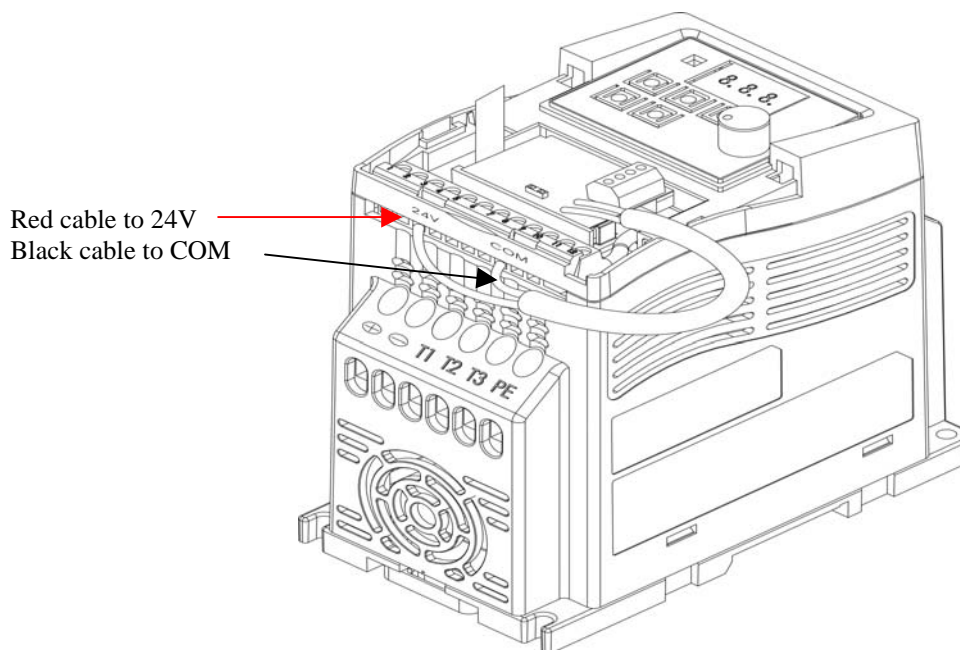


EDX-LED connection diagram



- When the inverter is powered on or off it is possible to set up or remove the remote keypad, but must be connected to TM2 24V DC power in normal use.
- For remote keypad operation set parameter b85 according to required action.

6.1.5 2 IN/1OUT expansion card (EDX-IO)



2 In/1 Out card wiring diagram

