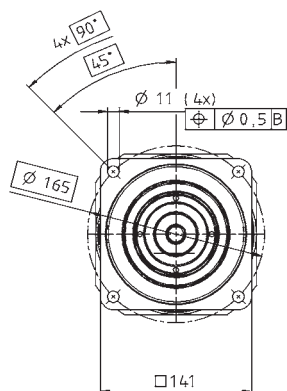
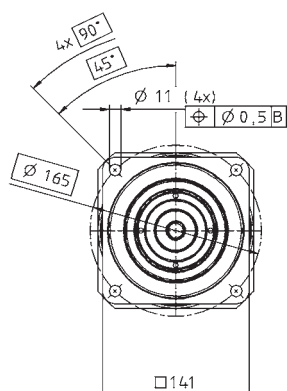


Motor shaft diameter [mm]

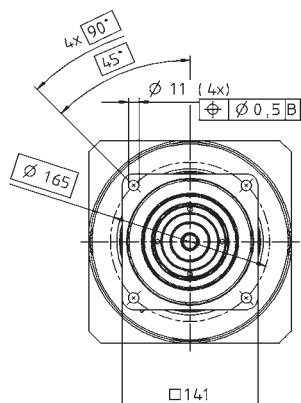
up to 24 <sup>4)</sup> (G)  
clamping hub  
diameter



up to 32/38 <sup>4)</sup>  
(I/K) clamping  
hub diameter

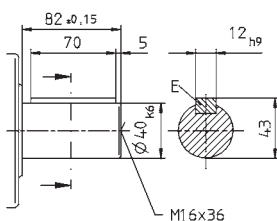


up to 48 <sup>4)</sup> (M)  
clamping hub  
diameter

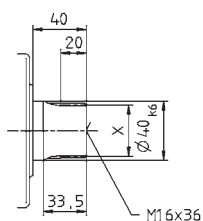


Alternatives: Output shaft variants

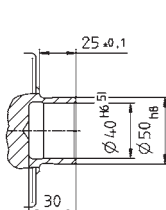
Keywayed output shaft in mm  
E = key as per DIN 6885, sheet 1, form A



Involute gearing DIN 5480 in mm  
X = W 40 x 2 x 30 x 18 x 6m, DIN 5480



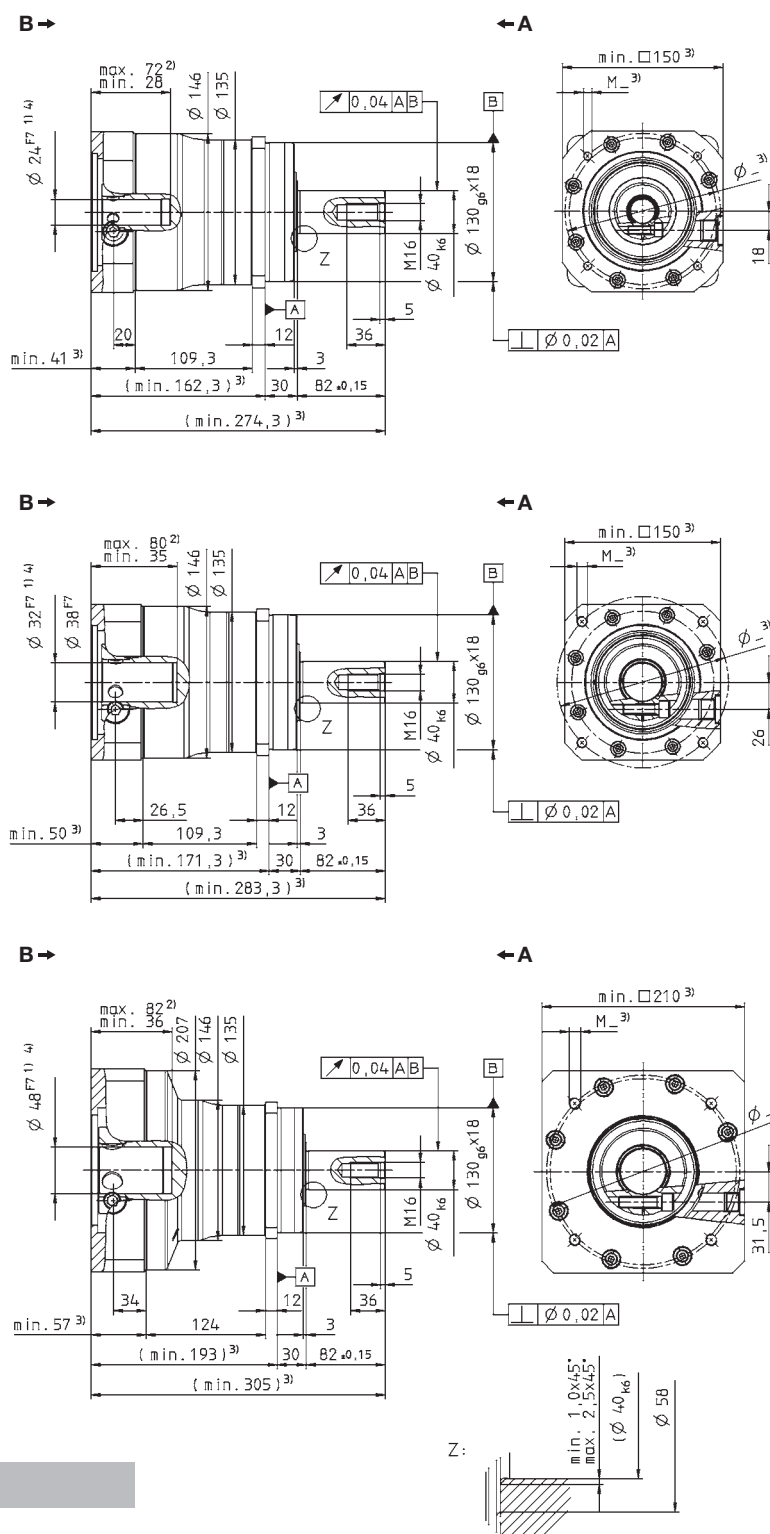
Shaft mounted  
Mounted via shrink disc



Non-tolerated dimensions  $\pm 1$  mm

- 1) Check motor shaft fit.
- 2) Min./Max. permissible motor shaft length.  
Longer motor shafts are adaptable, please contact us.
- 3) The dimensions depend on the motor.
- 4) Smaller motor shaft diameter is compensated by a bushing with a minimum thickness of 1 mm.
- 5) Tolerance h6 for mounted shaft.

 Motor mounting according to operating manual



SP+

