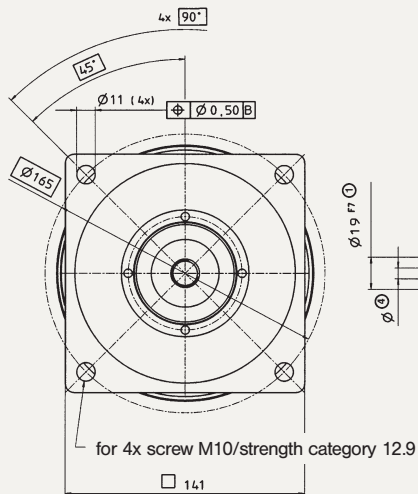


View A

Motor shaft diameter (mm)

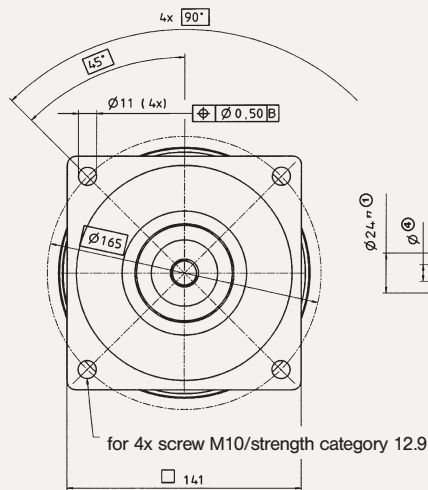
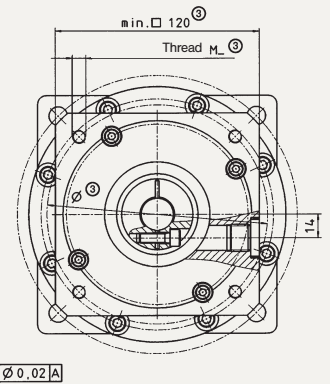
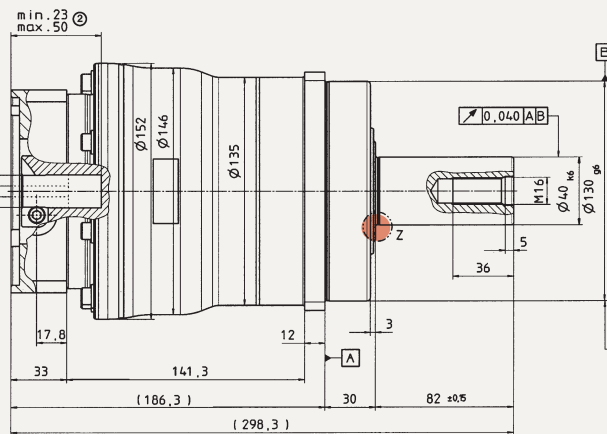
View B



B →

up to 19 □

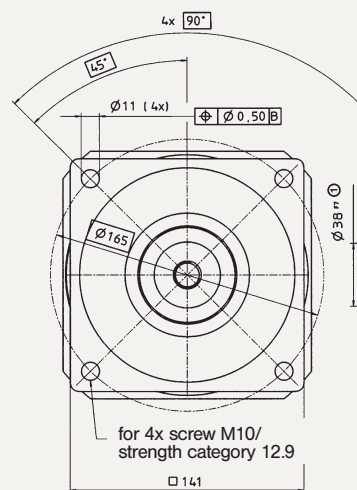
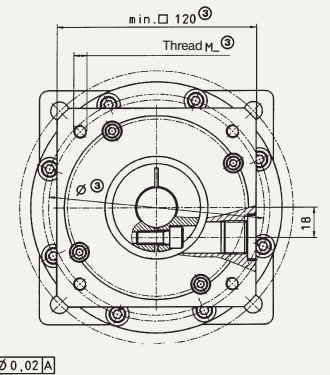
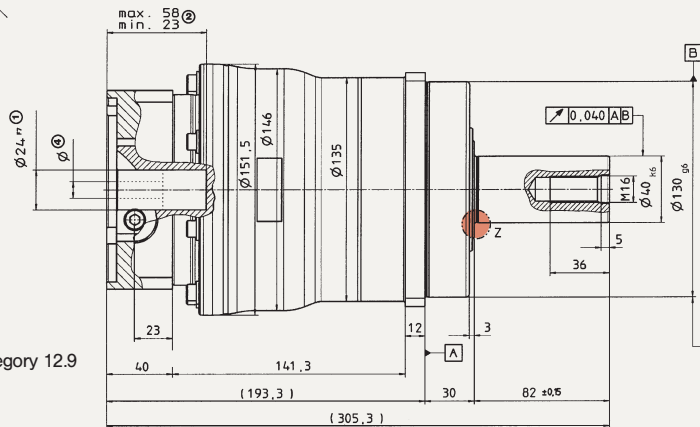
← A



B →

up to 24 □

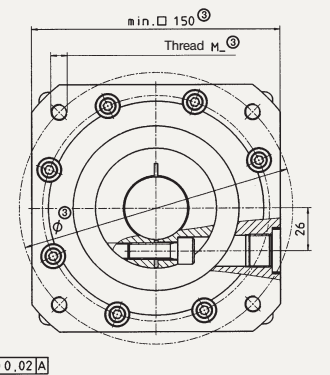
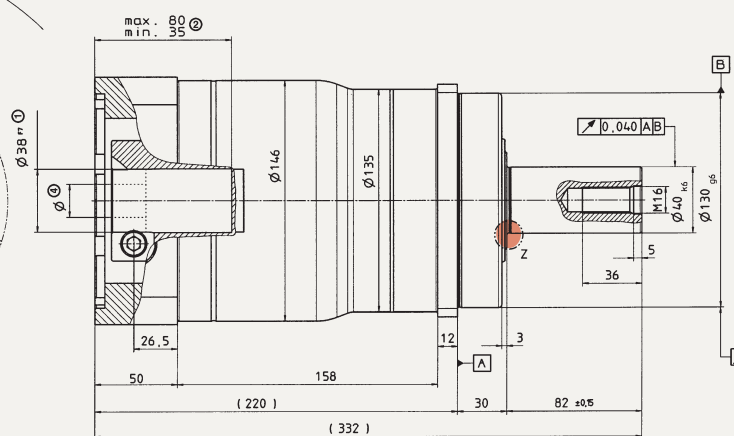
← A



B →

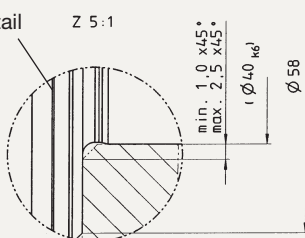
up to 38 □

← A



Z: Detail

Z 5:1



Dimensions without specified tolerances ±1 mm.

□ Check motor shaft fit. See page 30.

□ Min./max. permissible motor shaft length. Longer motor shaft is possible. Please call alpha.

□ The dimensions depend on the motor.

□ Smaller motor shaft diameter is compensated by a bushing with at least 1 mm thickness (see page 30).

⚠ Motor mounting according to operating manual.